



advanced innovation technology

Strada del Cascinotto 139/43 - 10156 Torino (TO) Tel. +39 011 8224969 Fax +39 011 0708775

www.tecno2.it vendite@tecno2.it

PRICE LIST**EFFECTIVE March 2024****A.I.TECH WHEEL STUDS, NUTS and BOLTS**

Wheel studs & bolts are produced from high tensile steel having rolled threads, reducing the risk of fatigue failures. Knowledge from our competition experience has led us to use a dissimilar material of the nut from that of the wheel stud. This plus copper coating of the nut assures security

**Nuts - Copper Plating**

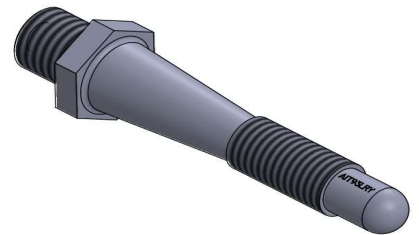
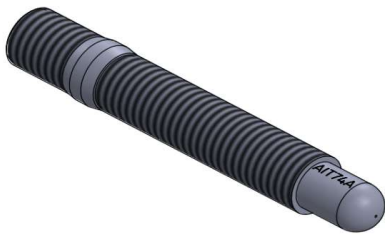
AIT-DADO	12x1,25 steel coppered nut ex 19mm, o.d. 23mm conical seat, total lenght 27mm	€	6,63
AIT-DADO-1	12x1,5 steel coppered nut ex 19mm, o.d. 23mm conical seat, total lenght 27mm	€	6,63
AIT-DADO-2	12x1,5 for FORD original wheels ex 19mm, o.d. 28mm conical seat, total lenght 28,5mm	€	7,02
AIT-DADO-3	12x1,25 PEUGEOT/CITROEN flat side nut ex 19mm, o.d. 28mm, total lenght 29mm	€	15,00
AIT-DADO-4	14x1,5 AUDI VW steel coppered nut ex 22mm, o.d. 25mm conical seat, total lenght 27mm	€	7,02
AIT-DADO-5	14x1,5 AUDI VW steel coppered nut ex 19mm, o.d. 25mm spherical seat, total lenght 28mm	€	7,02
AIT-DADO-6	14x1,5 steel coppered nut ex 19mm, o.d.25mm conical seat, total lenght 27mm	€	6,68
AIT-DADO-7	12x1,25 Exag. 17mm, o.d. 25mm steel copperd nut spherical seat, total lenght 28mm	€	7,02
AIT-DADO-8	12x1,25 Exag. 17 , o.d. 25mm steel coppered nut spherical seat, total lenght 27mm	€	6,89
AIT-DADO-9	12x1,25 Exag. 17 , o.d. 25mm steel coppered nut conical seat, total lenght 27mm	€	7,02
AIT-DADO-10	12x1,5 Exag. 19mm, o.d. 23mm steel coppered nut (Mitsubishi gr. N) conical seat, total lenght 33mm	€	7,41
AIT-DADO-11	12x1,25 Exag. 19mm, o.d. 23mm steel coppered nut conical seat, total lenght 33mm	€	7,41
AIT-DADO-12	12x1,25 coppered steel nut ex 19mm, o.d. 28mm conical seat, total lenght 28,5mm	€	10,50
AIT-DADO-15	1/2" UNF exag. 3/4" steel coppered nut , total lenght 27mm	€	7,02
AIT-DADO-16	14x1,25 steel coppered nut ex 19mm, o.d.25mm conical seat, total lenght 27mm	€	9,74
AIT-DADO-18	12x1,5 Exag. 17 , o.d. 23mm steel coppered nut conical seat, total lenght 25mm	€	10,50
AIT-DADO-19	12x1,5 Exag. 17 , o.d. 25mm steel coppered nut spherical seat, total lenght 27mm	€	7,41
AIT-DADO-XL	14 X 1,5 Closed , Exag. 19mm, o.d. 25mm , steel coppered nut conical seat, total lenght 51mm	€	19,00

Ergal Nuts- Black Deep Anodizing

AIT-DAAL	12x1,25 Ergal alloy competition nut (black) ex 19mm, o.d. 22mm conical seat, total lenght 27mm	€	8,78
AIT-DAAL1	12x1,5 Ergal alloy competition nut (black) ex 19mm, o.d. 22mm conical seat, total lenght 27mm	€	8,78
AIT-DAAL2	12x1,25 Ergal alloy blank nut (black) ex 19mm, o.d. 22mm conical seat, total lenght 27mm	€	8,78
AIT-DAAL3	12x1,5 Ergal alloy blank nut (red or blue) ex 19mm, o.d. 22mm conical seat, total lenght 27mm	€	8,78
AIT-DAAL6	14X1,5 Ergal alloy competition nut (black) ex 19mm, o.d. 25mm conical seat, total lenght 27mm	€	9,70
AIT-DAAL8	14X1,5 Ergal alloy competition nut (black) ex 19mm, o.d. 25mm spherical seat, total lenght 31mm	€	9,70
AIT-DAAL11	12X1,5 Ergal alloy competition nut (black) ex 19mm o.d. 28 conical seat, total lenght 27mm	€	9,70
AIT-DAAL15	1/2" UNF Ergal alloy competition nut (black) exag. 3/4", o.d. 25mm conical seat, total lenght 27mm	€	9,70

NEWS - Nuts Antioxide Black - Minimum order q.ty 100pcs

AIT-DADO-BLK	12x1,25 steel coppered nut ex 19mm, o.d. 23mm conical seat, total lenght 27mm	€	7,29
AIT-DADO-1BLK	12x1,5 steel coppered nut ex 19mm, o.d. 23mm conical seat, total lenght 27mm	€	7,29
AIT-DADO-2BLK	12x1,5 for FORD original wheels ex 19mm, o.d. 28mm conical seat, total lenght 28,5mm	€	7,72
AIT-DADO-3BLK	12x1,25 PEUGEOT/CITROEN flat side nut ex 19mm, o.d. 28mm, total lenght 29mm	€	16,50
AIT-DADO-4BLK	14x1,5 AUDI VW steel coppered nut ex 22mm, o.d. 25mm conical seat, total lenght 27mm	€	7,72
AIT-DADO-5BLK	14x1,5 AUDI VW steel coppered nut ex 19mm, o.d. 25mm spherical seat, total lenght 28mm	€	7,72
AIT-DADO-6BLK	14x1,5 steel coppered nut ex 19mm, o.d.25mm conical seat, total lenght 27mm	€	7,35
AIT-DADO-7BLK	12x1,25 Exag. 17mm, o.d. 25mm steel copperd nut spherical seat, total lenght 28mm	€	7,72
AIT-DADO-8BLK	12x1,25 Exag. 17 , o.d. 25mm steel coppered nut spherical seat, total lenght 27mm	€	7,58
AIT-DADO-9BLK	12x1,25 Exag. 17 , o.d. 25mm steel coppered nut conical seat, total lenght 27mm	€	7,72
AIT-DADO-10BLK	12x1,5 Exag. 19mm, o.d. 23mm steel coppered nut (Mitsubishi gr. N) conical seat, total lenght 33mm	€	8,15
AIT-DADO-11BLK	12x1,25 Exag. 19mm, o.d. 23mm steel coppered nut conical seat, total lenght 33mm	€	8,15
AIT-DADO-12BLK	12x1,25 coppered steel nut ex 19mm, o.d. 28mm conical seat, total lenght 28,5mm	€	11,55
AIT-DADO-15BLK	1/2" UNF exag. 3/4" steel coppered nut , total lenght 27mm	€	7,72
AIT-DADO-16BLK	14x1,25 steel coppered nut ex 19mm, o.d.25mm conical seat, total lenght 27mm	€	10,71
AIT-DADO-18BLK	12x1,5 Exag. 17 , o.d. 23mm steel coppered nut conical seat, total lenght 25mm	€	11,55
AIT-DADO-19BLK	12x1,5 Exag. 17 , o.d. 25mm steel coppered nut spherical seat, total lenght 27mm	€	8,15
AIT-DADO-XLBLK	14 X 1,5 Closed , Exag. 19mm, o.d. 25mm , steel coppered nut conical seat, total lenght 51mm	€	20,90



Ref.	Description	EURO (c)	
AIT-74A	12X1,25 - 12X1,25 L.74 wheel stud	€	7,78
AIT-86A	12x1,25 - 12x1,25 L.86 wheel stud	€	8,15
AIT-102A	12x1,25 - 12x1,25 L.102 wheel stud	€	9,70
AIT-74B	12x1,25 - 12x1,5 L.74 wheel stud	€	7,78
AIT-86B	12x1,25 - 12x1,5 L.86 wheel stud	€	8,15
AIT-102B	12x1,25 - 12x1,5 L.102 wheel stud	€	9,70
AIT-74C	12x1,5 L.74 FORD wheel stud	€	13,94
AIT-86C	12x1,5 L.86 FORD wheel stud	€	14,73
AIT-102C	12x1,5 L.102 FORD wheel stud	€	15,30
AIT-74F	14x1,5 - 14x1,5 L.74 wheel stud (VW-Audi)	€	7,78
AIT-86F	14x1,5 - 14x1,5 L.86mm wheel stud (VW-Audi)	€	8,15
AIT-102F	14x1,5 - 14x1,5 L.102mm wheel stud (VW-Audi)	€	9,70
AIT-81G	14x1,5 L.81 PORSCHE wheel stud	€	16,50
AIT-102G	14x1,5 L.102 PORSCHE wheel stud	€	18,73
AIT-70HY*	12x1,5 L.70 HYUNDAI wheel stud	€	16,22
AIT-74H	12x1,5 L.74 HONDA wheel stud	€	16,22
AIT-67M	12x1,25 L.67 MAZDA wheel stud	€	16,22
AIT-71MZ	12x1,5 L.71 MAZDA wheel stud	€	16,22
AIT-73MIT	12x1,5 L.73 MITSUBISHI wheel stud	€	16,22
AIT-102MIT*	12x1,5 L.102 MITSUBISHI wheel stud	€	18,74
AIT-68N	12x1,5 L.68 NISSAN wheel stud	€	16,22
AIT-70N	12x1,25 L.70 NISSAN wheel stud	€	16,22
AIT-72S	12x1,25 L.72 SUBARU wheel stud	€	16,22
AIT-78T	12x1,5 L.78 TOYOTA wheel stud	€	16,22
AIT-76V*	12x1,5 L.76 VOLVO wheel stud	€	16,22
AIT-74XA	12X1,25 - 12X1,25 L.70 mm special wheel stud	€	15,77
AIT-74XB	12x1,25 - 12x1,5 L.70mm special wheel stud	€	15,77
AIT-88XA	12X1,25 - 12X1,25 L.88 mm special wheel stud	€	18,16
AIT-88XB	12x1,25 - 12x1,5 L.88 mm special wheel stud	€	18,16
AIT-65D*	12 x 1,25 L=65mm wheel stud (Daewoo Matiz)	€	16,22
AIT-80V*	12X1,5 L.80 VOLVO wheel stud	€	15,54
AIT-88J	12x1,5 L.88 JAGUAR wheel stud	€	16,72
AIT-61F	14X1,5 L. 61 wheel stud	€	15,54
AIT-76OP	12x1,5 -12x1,5 L.76 (Opel)	€	8,35
AIT-94OP	12x1,5 -12x1,5 L.94 (Opel)	€	8,91
AIT-102OP	12x1,5 -12x1,5 L.102 (Opel)	€	10,35
AIT-77M	14x1,25 - 14x1,5 L. 74 (Bmw Mini after July '06)	€	9,37
AIT-86M	14x1,25 - 14x1,5 L. 86 (Bmw Mini after July '06)	€	9,92
AIT-102M*	14x1,25 - 14x1,5 L. 102 (Bmw Mini after July '06)	€	11,87
AIT-74STR	14x1,5 L.74 LANCIA STRATOS wheel stud	€	12,79
AIT-80NSR*	5/8" L. 80mm wheel NAFCAR wheel stud	€	12,79
AIT-110NSR*	5/8" L. 110mm wheel NAFCAR wheel stud	€	15,30
AIT-93LRY	12x1,25 - 14x1,5 L. 87 ex 20mm (Lancia rally)	€	16,45

* MOQ Minimum order quantity 100pcs / Minimo ordinabile 100pz

Double thread exagonal stud

The front part is made in a hexagon to facilitate forced screwing. The rounded "nose" and the linear hexagonal part serve as a guide to the nut, ensuring fast and safe screwing even with pneumatic and professional electric tools. The thread-locking product on the root side is the Permacote 85 (Blue type). It is anti-unscrewing fluid coating, which will guarantee perfect sealing over time.



Codice		€uro (c)	
AIT-74A.EX*	12x1,25 - 12x1,25 L.74 wheel stud	€	9,25
AIT-86A.EX	12x1,25 - 12x1,25 L.86 wheel stud	€	9,70
AIT-102A.EX	12x1,25 - 12x1,25 L.102 wheel stud	€	11,54
AIT-74B.EX*	12x1,25 - 12x1,5 L.74 wheel stud	€	9,25
AIT-86B.EX	12x1,25 - 12x1,5 L.86 wheel stud	€	9,70
AIT-102B.EX	12x1,25 - 12x1,5 L.102 wheel stud	€	11,54
AIT-74F.EX*	14x1,5 - 14x1,5 L.74mm wheel stud (VW-Audi)	€	9,25
AIT-86F.EX	14x1,5 - 14x1,5 L.86mm wheel stud (VW-Audi)	€	9,70
AIT-102F.EX	14x1,5 - 14x1,5 L.102mm wheel stud (VW-Audi)	€	11,54
AIT-77M.EX*	14x1,25 - 14x1,5 L. 74 (Bmw Mini after July '06)	€	11,14
AIT-86M.EX	14x1,25 - 14x1,5 L. 86 (Bmw Mini after July '06)	€	11,80
AIT-102M.EX*	14x1,25 - 14x1,5 L.102 (Bmw Mini after July '06)	€	14,11
AIT-76OP.EX	12x1,5 -12x1,5 L.76 (Opel)	€	9,93
AIT-94OP.EX	12x1,5 -12x1,5 L.94 (Opel)	€	10,59
AIT-102OP.EX*	12x1,5 -12x1,5 L.102 (Opel)	€	12,31

* **MOQ** Minimum order quantity 100pcs / Minimo ordinabile 100pz